



# Zunfthaus zur Safran

Limmatquai 54 . 8001 Zürich



Grosser Zunftsaal, 1<sup>st</sup> floor



Kleiner Zunftsaal, 2<sup>nd</sup> floor

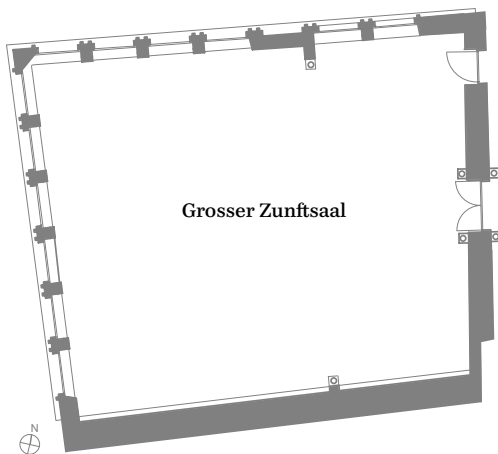


Saal zur Weissen Rose, 2<sup>nd</sup> floor

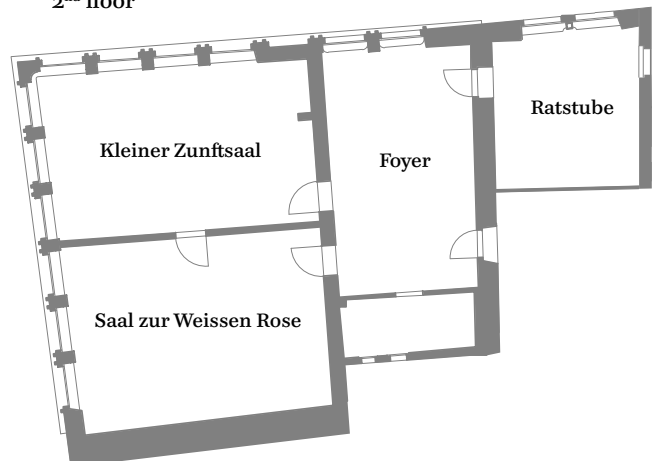


Ratstube, 2<sup>nd</sup> floor

1<sup>st</sup> floor





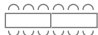





2<sup>nd</sup> floor





# Zunfthaus zur Saffran

Limmatquai 54 . 8001 Zürich

| Seating/Number of Guests  | Grosser Zunftsaal<br>188 m <sup>2</sup> | Kleiner Zunftsaal<br>57 m <sup>2</sup> | Saal zur Weissen Rose<br>54 m <sup>2</sup> | Ratstube<br>30 m <sup>2</sup> |
|---|---|--|--|-------------------------------|
|  Banquet with round tables | 150                                     | 40                                     | 32   | 24                            |
|  Round tables half moon    | 80                                      | 30                                     | 24   | 18                            |
|  Banquet on square tables  | 180                                     | 40                                     | 40   | 18                            |
|  Aperitif and receptions   | 250                                     | 55                                     | 55   | 40                            |
|  Theater style             | 250                                     | 50                                     | 50   | 25                            |
|  Seminar                   | 100                                     | 30                                     | 30   | 16                            |
|  Seminar horseshoe        | 40                                      | 24                                     | 24   | 12                            |
|  Grouped tables          | 50                                      | 23                                     | 23   | 14                            |
| <b>in CHF</b>   |   |  |  |                               |
| Minimum consummation  |   |  |  |                               |
| Midday  | 4'500.-                                 | 1'200.-                                | 1'200.-                                    | On enquiry                    |
| Evening   | 6'500.-                                 | 1'200.-                                | 1'200.-                                    |                               |
| Late-night surcharge<br>as of 23.30 h: 500.- per hour   |   |  |  |                               |

## Historic rooms with modern infrastructure

|               |   |                          |
|---------------|---|--------------------------|
| <b>in CHF</b> | Beamer (full HD, HDMI) incl. laptop and screen    | 350.-                    |
|               | Flipchart with seminar box                        | 30.-                     |
|               | Sound system with two microphones (Gr. Zunftsaal) | 220.-                    |
|               | Stage pieces 1m x 2m in size                      | 120.- per piece          |
|               | WiFi  | 0.- available on request |
|               | Grand piano Steinway & Sons                       | 450.-                    |
|               | Chair covers                                      | 12.- per piece           |
|               | Table decorations                                 | 30.- per table           |

## We gladly fulfill individual wishes

The Zunfthaus zur Saffran not only stands for outstanding hospitality, instead for individual ideas and advice - whether by the choice of a hall, table decorations or proposals for musicians and artistes.